

# IM R 18 SA PRO - IM R 18 SA

**18 m**  
working height

**NEW**

## STANDARD EQUIPMENT

- Automatic outriggers levelling with electronic inclinometer
- Outrigger pads (Ø 200 mm)
- Emergency hand pump
- Cylinder holding valve
- Electronic hour meter
- Momentum device
- Load cell
- Hydraulic Jib
- Rubber tracks
- Hydraulically adjustable tracks width (IM R 18 SA PRO)
- Double speed traction (IM R 18 SA PRO)
- Basket rotation ± 62° (IM R 18 SA PRO)
- Wireless radio-control box with 4.3" display (IM R 18 SA PRO)
- Removable wired control box (IM R 18 SA)
- Air / Water outlet in the platform
- 230V - 16 A outlet in the platform
- Upper control box cover

## PETROL/DIESEL EQUIPMENT

- Honda GX390 petrol engine - 8.7 kW 3600 rpm
- Kubota Z602 diesel engine - 12.5 kW 3600 rpm
- 230V - 16 A electro-pump for indoor use

## LITHIUM EQUIPMENT

- Lithium batteries 48V / 110Ah
- Electric motor 48V / 4.5 kW AC low voltage

## HYBRID EQUIPMENT

- Lithium batteries 48V / 110Ah
- Electric motor 48V / 4.5 kW AC low voltage
- Honda GX160 petrol generator - 3.6 kW 3600 rpm



Max working height  
**18 m**



Max side outreach  
**11 m / 90 kg** (IM R 18 SA PRO)  
**9.6 m / 90 kg** (IM R 18 SA)



Boom type  
**Single Articulation**



Capacity  
**230 kg**

## OPTIONALS

- Hydraulically adjustable tracks width (IM R 18 SA)
- Double speed traction (IM R 18 SA)
- Basket rotation kit (IM R 18 SA)
- Wireless radio-control box with 4.3" display (IM R 18 SA)
- Wireless radio-control box with 2.8" display (IM R 18 SA)
- Non-marking rubber tracks
- Oversized outrigger pads (Ø 350 mm)
- Rectangular outrigger pads
- Working light in the platform
- Aluminium basket 0.90 x 0.70 x 1.10 m
- Winch kit (IM R 18 SA PRO)
- Lifting hook kit (IM R 18 SA)
- IMERVIEW kit

## PETROL/DIESEL OPTIONALS

- 12V emergency electro-pump

## LITHIUM/HYBRID OPTIONALS

- 48V emergency electro-pump



## BENEFITS

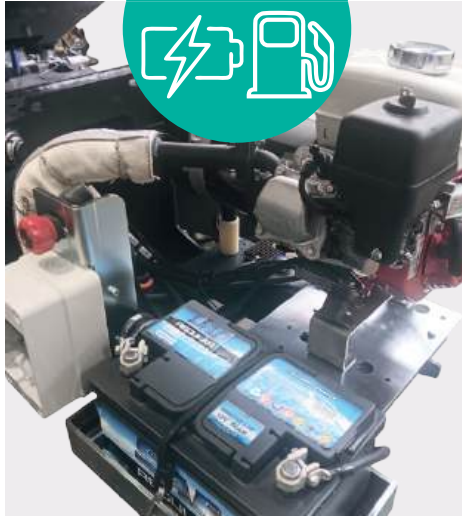
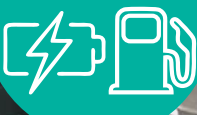
- ✓ New removable control box with high resolution 4.3" display and easier operator interaction for better machine control (IM R 18 SA PRO).
- ✓ Return-to-Home function for automatic closing of the platform (IM R 18 SA PRO).
- ✓ Hydraulically adjustable tracks width: more stability and traction to move around the building site or rough terrain (IM R 18 SA PRO).
- ✓ Basket rotation ± 62°: complete placement on working site in any condition (IM R 18 SA PRO).
- ✓ Max. side outreach of 11 m / 90 kg (IM R 18 SA PRO) or 9.6 m / 90 kg (IM R 18 SA), with 6 m of Up & Over height.
- ✓ 4 available engines: petrol, diesel, lithium, hybrid.
- ✓ Upper control box cover for complete protection of the remote control when not in use.
- ✓ New automotive-derived electrical system, ensuring greater reliability, energy efficiency, and simplified maintenance.
- ✓ Proportional and simultaneous electro-hydraulic controls: efficiency and safety for operators.
- ✓ Automatic outriggers levelling: maximum easiness of use and safety.
- ✓ Permanent weight control device for improved safety and performance.
- ✓ Turret slewing 360° (not continuous): outstanding aerial accessibility in any work situation.
- ✓ New system with lever for emergency descent.
- ✓ Compact size, with limited overall outrigger footprint.
- ✓ Aluminium basket 1.50 x 0.70 x 1.10 m.

LITHIUM



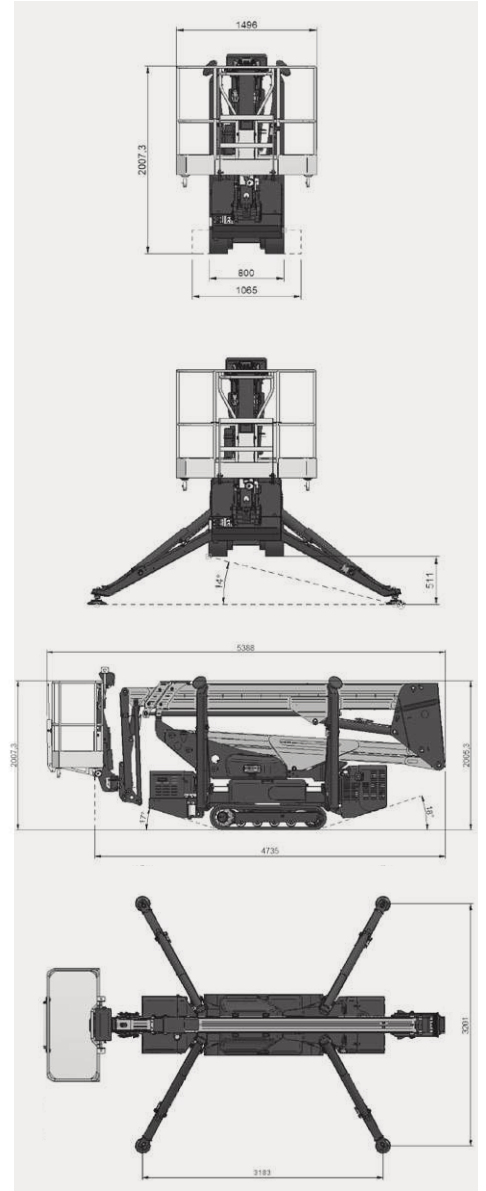
Lithium battery compartment (lithium version).

HYBRID



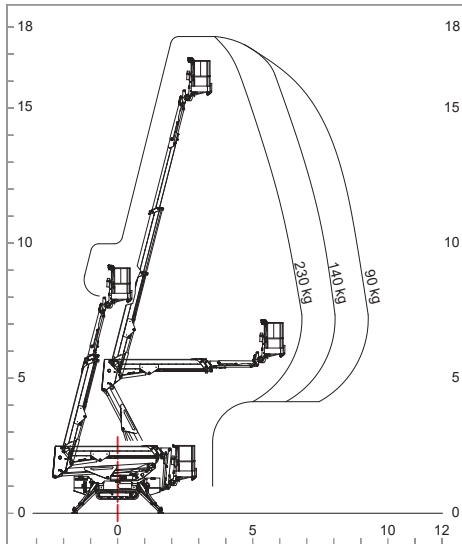
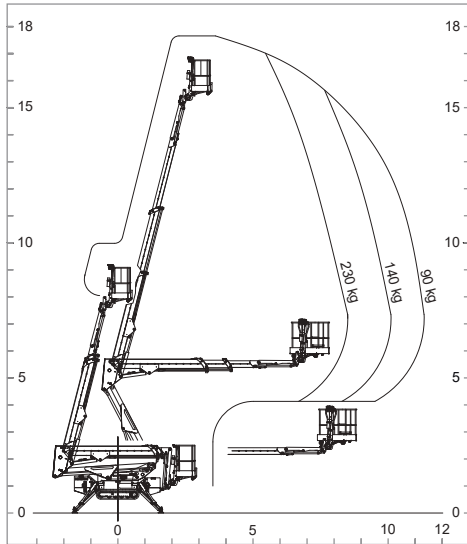
Petrol generator and lithium battery group (hybrid version).

IMR 18 SA PRO - IMR 18 SA



IMR 18 SA PRO

IMR 18 SA



		IMR 18 SA PRO			IMR 18 SA		
		Petrol/diesel engine	Lithium	Hybrid	Petrol/diesel engine	Lithium	Hybrid
Working height	m		17.6		17.6		
Platform height	m		15.6		15.6		
Side outreach	m/kg		8.5 / 230 10.1 / 140 11.0 / 90		7.1 / 230 8.3 / 140 9.6 / 90		
Up & Over	m		6		6		
Turret slewing	(°)		360 (not continuous)		360 (not continuous)		
Basket dimensions	m		1.50 x 0.70 x 1.10		1.50 x 0.70 x 1.10		
Overall outrigger footprint	m		3.18 x 3.20		3.18 x 3.20		
Driving speed	km/h	2	1.8	1.8	2	1.8	
Gradeability	%		30		30		
Max load capacity	kg		230		230		
Electric motor	V/kW	230 / 2.2	48 / 4.5 AC low voltage		230 / 2.2	48 / 4.5 AC low voltage	
Petrol engine Honda GX390	kW/rpm	8.7 / 3600	-	-	8.7 / 3600	-	-
Diesel engine Kubota Z602	kW/rpm	12.5 / 3600	-	-	12.5 / 3600	-	-
Lithium batteries	V/Ah	-	48 / 110		-	48 / 110	
Lithium batteries charger	V/A	-	48 / 50		-	48 / 50	
Petrol generator Honda GX160	kW/rpm	-	-	3.6 / 3600	-	-	3.6 / 3600
Current supplied by generator	A	-	-	10	-	-	10
Transport length (without basket)	m		5.10 (4.40)			5.10 (4.40)	
Transport width (with extended tracks)	m		0.80 (1.10)			0.80 (1.10)	
Stowed height (with outrigger pads)	m		1.99 (2.03)			1.99 (2.03)	
Total weight of the machine	kg	2860 (petrol) 2920 (diesel)	2930	2940	2500 (petrol) 2560 (diesel)	2570	2580